

Sikshana Foundation



2009-10 Annual Report

[Executive Summary](#)

[Message from the Chairman](#)

[Introduction to Sikshana Foundation](#)

[2009-10 Activity Update](#)

[Impact](#)

[Appendix 1 – School Ranking Methodology](#)

Enclosures

1. [Composition of the Board](#)
2. [Financial Statements](#)
3. [The Numbers in Simple Terms](#)
4. [Sikshana Financial Transparency Standard \(Donor vs Expense Matrix\)](#)

Executive Summary

Sikshana is an effort evolving a sustainable and replicable model for the public education system at the primary level. It is backed by a team of senior Professionals with considerable expertise and Managerial skills

At Rs 500 per child per annum, it is a low cost effort and focused on motivation as a tool rather than infrastructure; it differs from other initiatives in the field in its adoption of a 'bottoms up' decentralized approach and involvement / empowerment of schools and communities. The program has also well defined exit strategies in view.

The program has achieved notable success, in quantifiable terms, in improving the quality of education in the schools that have been nurtured under it; as a result, it has grown during the last five years to cover 250 schools and over 30,000 children.

Message from the Chairman

It is my privilege and pleasure to reach you through this Annual Report for the financial year 2009-2010 highlighting key events and milestones for Siskhana.

5 years on, we can look back and take pride in evolving a scalable model for creating a positive impact on 250 schools and over 30,000 children. Our model will of course constantly morph and adapt as we learn from our new experiences over the next five years. In this journey we will be guided by our mission to influence three specific issues in our public education system: student's lack of interest/ inadequate effort/ lack of teachers (effective teaching). We appreciate the continued active contributions from our founder and Chief Mentor E.S. Ramamurthy in keeping us focused on this core mission.

2009-10 saw Sikshana grow beyond our presence in Kanakapura, we adopted new schools in Anekal, Hoskote, Chikballapur Taluks and a cluster of schools in Madanapalle, Andhra Pradesh. The year also saw Sikshana add a high school initiative in Kanakapura.

Scale requires robust organizational foundations and leadership; I take this opportunity to recognize the tireless efforts of our CEO, Prasanna in building these systems and processes.

We appreciate the continued faith and support of Sikshana's many donor organizations; the hard work and dedication from all esteemed members of the board, our trustees, mentors and volunteers.

Finally, our special appreciation and thanks (from our hearts) to the hundreds of teachers who day after day make our efforts fruitful

With best wishes and greetings.

Yours sincerely,

Prashanth Prakash

Introduction to Sikshana Foundation

Sikshana is a unique grassroots program launched by professionals to improve the quality of learning in our Government schools. It is a program aimed at making neighborhood public schools attractive and meaningful to children and their parents.

The program is essentially a motivational effort, focusing both on teachers and students. It helps the schools to develop the necessary skills to analyze the problems faced by them and come up with their own solutions; the role of Sikshana is limited to being a good facilitator in the process. The schools are further encouraged to come up with their own vision of the future, typically over five years, and individual targets for each year in clear quantified terms. The program arranges to provide the essential resources to enable them to achieve these goals. Over the past five years, it has been established that, with an incremental cost of not more than Rs 500 per student per annum, it is possible to make a significant impact on the quality levels of learning in the schools.

Sikshana does the following routinely in the Upper Primary schools:

- Introduce culture of reading through book shop visits, book exhibitions and daily reading programs
- Equip children with sufficient writing supplies to improve their writing skills
- Equip schools with modern computing facilities to prepare digitally-literate students for the future
- Bring in experts to prepare students in sports, fine arts and cultural events
- Reward meritorious students from every village with an educational tour to Delhi.
- Equip teachers with spot prizes in classrooms to enliven the atmosphere and motivate all children.
- Provide support for inducting local talent to assist them in teaching children.
- Train and motivate teaching staff to work as a team towards enhanced goals.
- Assist the school to improve electricity, sanitation, drinking water supply in their schools
- Fund talented kids through High school with scholarships

2009-10 Activities and their Impact

The year 2009-10 was an exciting year for Sikshana Foundation as it grew from 135 to 250 schools by inducting all 34 high schools in Kanakapura along with new higher primary schools in the Kanakapura, Anekal, Hoskote, Chikballapur Taluks and a cluster of schools in Madanapalle, Andhra Pradesh. With this all the higher primary schools and high schools in the Kanakapura taluk are now nurtured by Sikshana. A number of activities were held through the year with specific expectation of outcomes and are listed as below. The impact of such activities as measured by Quantitative assessments is listed after the activities list.

Expected Outcome	Date	Activity Description	Impact
TQM Concepts in Sikshana Schools	21 st Jun to 30 th Jul 2009	TQM Trainings for Higher Primary school teachers at Kanakapura.	400 teachers
	29 th Jun 2009	TQM Training for High school teachers at Kanakapura	90 teachers
	30 th Jun 2009	Sikshana Orientation & TQM training for teachers in Chikballapur cluster.	40 teachers
	9 th Jul 2009	Sikshana Orientation & TQM training for teachers in Hoskote cluster.	50 teachers
	27 th Jul 2009	Sikshana Orientation & TQM training for teachers in Chikballapur cluster.	40 teachers
	30 th Jan 2010	Sikshana Orientation & TQM training for all teachers in Anekal cluster.	150 teachers
Teachers are Motivated	20 th Jun 2009	Sikshana program Inauguration at Chikballapur taluk.	90 teachers
	9 th Jul 2009	Sikshana program Inauguration at Hoskote taluk.	50 teachers
	31 st Aug 2009	Book fair for teachers in Chikballapur	18 teachers
	23 rd Jan 2010	Sikshana Annual Day at Kanakapura	800 teachers
	27 th Jan & 11 th Feb 2010	Kanakapura school visit by principals from all Chikballapur schools.	18 teachers
	26 th Feb 2010	Chikballapur cluster principals sharing meeting at Kuppalli school.	18 teachers
Teachers are equipped to handle Sikshana Tech Initiative	8 th Aug - 29 th Aug 2009	Computer Training for teachers in Kanakapura 4 batches	300 teachers
	18 th Feb & 19 th Feb 2010	Computer training for teachers in Anekal cluster	60 teachers
	13 th Mar 2010	Awareness on Linux & Open source software	30 teachers

Children and Community are Motivated	Jul – Aug 2009	Laptop and Memory Chip Distribution Program	120 schools, 6500 children
	5 th Jul 2009	2008 Batch Scholarship Distribution Program	277 children
	8 th Aug 2009	Delhi Trip Quiz – conducted by Amurth Foundation at Kanakapura	1504 children
	15 th Aug 2009	Delhi trip Quiz- conducted by Amurth Foundation in Chikballapur	240 children
	Oct 14/19 2009	Delhi trip 2009 two batches	99 students & 13 teachers.
	24 th Oct 2009	Dell Day at Kanakapura	400 children
	13 th Mar 2010	Qualcomm Science Exhibition	200 children
Empower children	3 rd Nov 2009	Book fair at Hoskote and Bangalore city schools.	70 children, 14 teachers.
	6 th Nov 2009	Book Fair at Anekal.	150 children, 30 teachers.
	7 th Nov 2009	Book Fair at Chikballapur.	90 children, 18 teachers
	10 th to 14 th Nov 2009	Book Fair at Kanakapura.	840 children, 168 teachers
	5 th Oct – 31 st Mar 2010	English and Math coaching class for below avg. students in 10 th Class (Total 31 sessions)	70 children
	Mar 2010	Select children in 10 th class were loaned with a solar lamp for use during the exams	84 children
Empower teachers	Jun 2009 - Mar 2010	HM Committee meeting at Kanakapura (Monthly once)	12 teachers
	3 rd Feb 2010	HM Committee formation and Meeting at Anekal.	12 teachers
	18 th Feb 2010	HM Committee formation and Meeting at Hoskote	10 teachers
Sports and Music	Jun 2009 - Mar 2010	Sports Training and Music Class, Every Saturday	30 and 60 children
	6 th to 27 th Dec 2009	Deccan Athletic Sports Meet at Bangalore 5 days sports meet.	10 children, 1 teacher
Assessments	Aug / Sep 2009 & Feb, Mar 2010	Assessment by Amruth Foundation at all Karnataka schools	3150 children
	Feb 2010	Assessment of Madanapalle schools	237 children
	31 st Mar 2010	Writing Speed & Reading Comprehension Assessment	59 children
	31 st Mar 2010	Dell Laptop and Memory Chip Project Assessment	80 children, 40 teachers

Outcome: TQM Concepts in Sikshana Schools

Sikshana mandates the application of Total Quality Management (TQM) concepts by teachers in their schools. In the pursuit of this goal at least one teacher and the school principal from all the schools nurtured by Sikshana in Kanakapura, Chikballapur, Anekal, Hoskote and Madanapalle blocks were trained on the concepts. The teachers in Kanakapura taluk have attended this training the previous years and therefore a minimum of two teachers representing a school was deemed sufficient to revisit the concepts along with all new teachers in the taluk. In the remaining blocks, all teachers were covered by the training program along with the initial orientation to Sikshana.

Introduction to TQM

A one day TQM workshop was held for all the nearly 360 teachers from the 120 higher primary schools and 90 teachers from 34 High school Teachers had participated in the



program. The training itself was one in groups of around 50 and focused on working with goals, importance of planning and also had some team building activities. The external facilitator focused on Quality and Sikshana staff talked on what Sikshana is all about.

There was a one day Sikshana orientation program for all the school teachers at Chikballapur. Mr. Ramamurthy, Founder Sikshana Foundation and Mr. Prasanna, Program Director, Sikshana, facilitated the training in this cluster.

A similar program was held in Hoskote taluk for the 10 schools where after the formal inauguration of the program in the morning the afternoon session was dedicated to training. All the principals and teachers from the 10 schools attended the program.



As Sikshana expanded into Anekal Taluk, a new approach was tried as the mentor in charge of the cluster was empowered to conduct the training at the school level using the same tools as used by the Sikshana trainers. This was an attempt to test the ability of Sikshana to scale up using decentralized approach for transfer of concepts. More details on this can be found at <http://sikshana.blogspot.com/2010/04/experiment-at-anekal.html>. Towards the end of the academic year a two hour orientation program for all teachers was conducted by Mr. E.S. Ramamurthy, Founder Sikshana Foundation in January 2010. After the orientation an open discussion between teachers and Prasanna (Program Director) was held to help both Sikshana and teachers to discuss the current year program implementation and thoughts on improving for year two of the program.

Outcome: Teachers are Motivated

Sikshana conducts an annual day program, awards best school of the year and sends teachers on educational tours with an expected outcome of motivating them to perform better. Teachers are selected based on their performance and their specific interests for the tours and this has created a sense of competition among them.

New schools in Chikballapur, Hoskote and Anekal

June / July saw the induction of 18 primary schools in Chikballapur, 10 schools in Hoskote and 30 schools in Anekal taluk. Since these were new areas Sikshana as part of the PR effort had inauguration programs with local department heads and other dignitaries. The goal of any of these formal or informal functions are to let the teachers know that we are there to work with them and appreciate their efforts in delivering quality education.

Teacher's library at Chikballapur

Six teachers from select schools in Chikballapur visited the Sapna book store in Bangalore and selected the books to setup a teacher's library for use by teachers of the 18 schools in Chikballapur. In a new cluster a powerful statement was made to the teachers that Sikshana is there to empower and equip teachers to improve themselves with a view of improving the schools.

5th Sikshana Annual Day at Kanakapura



The Fifth Annual Day of Sikshana Schools in Kanakapura was held on 23rd January 2010. It was also the day on which the newly inducted 34 High schools were brought into the fold under the High school initiative. With all teachers from 134 primary schools and few teachers from Anekal and Hoskote participating this turned out to be the largest such function in Kanakapura for Sikshana ever. The other unique feature of this years program was that it was completely coordinated by a group of Taluk HM Committee teachers who worked tirelessly round the clock for a week to make it a memorable success.

The function was attended by Senior Officials of the Department of Education, with Project Director Mr. Manjunath from Rashtriya Madyamika Shikshan (RMS) Bangalore, Kanakapura Block Education Officer and Block Resource Coordinator along with board of directors from Sikshana.



This year Sikshana Nudi Magazine was inaugurated by the Indira Sharma, board member of Sikshana Foundation. Hundred selected schools got a nice table for their new laptops which were made of recycled office cube surplus donated by Societe General in Bangalore. The tables were designed by Mr. Prakash and more info on him can be found at <http://www.nandiprakash.blogspot.com/>

Sikshana School of the Year 2009-10 – Hosadurga GMHPS



This school belongs to the second cluster nurtured under Sikshana at Kanakapura; it is now emerging as a role model for the rest. Hosadurga is a village in Kanakapura Taluk, 28 Kms from the Kanakapura Town. The school is well laid out with enough class rooms and nice garden which is maintained by the students. The school has 261 students supported by a team of 8 teachers.

This school was ranked at near bottom among 36 schools three years ago and with new staff who took keen interest in implementing Sikshana the school zoomed all the way to the top. This year each of the schools were ranked based on a set of parameters which includes the school academic performance, Sikshana assessment scores, implementation of Sikshana activities, performance in interschool quiz, sports and cultural competitions, community support etc. The school ranking methodology and the ranking for the 120 schools is listed in [Appendix 1](#).

Rank	School Name	No. of Students	Total Points	Award
1	Halugondanahalli	203	837	Sikshana School of Excellence
2	Hulibele	154	825	Sikshana School of Excellence
3	Hosadurga	330	824	Sikshana School of the Year
4	Harohalli	399	820	Best Large School of the Year
5	Kamsagara	107	814	
6	Vaderahalli	92	805	Best Small School of the Year
7	Halasuru	174	802	Best School in Computer Application
8	Sathanuru	278	800	
9	Kaggalahalli	145	800	Most Improved School of the Year
10	Acchalu	177	787	
11	Erandyapanahalli	188	784	
12	Malligemettalu	80	782	
13	Kachuvanahalli	107	782	
14	Anedoddi	178	776	
15	Chikkamuduvadi	208	776	
16	Gabbadi	101	771	
17	P.Rampura	85	769	
18	Thotahalli	127	768	
19	Kottagalu	111	764	
20	Doddalahalli	301	763	
21	Boohalli	122	758	
22	Arekere	71	752	Special Award - Most inquisitive children
23	Kokkarehosahalli	74	751	
24	Kodihalli	528	751	
25	Sasalapura	134	749	

This year the top 25 schools were recognized by name and various categories of awards were instituted in addition to the Best School of the year. Last year's best school Halugondanahalli schools topped again and Hulibele which topped 3 years in a row stood second and both were recognized with "School of Excellence" award.

Kanakapura schools visit by teachers from Chikballapur cluster

At least one teacher from each of the 18 schools in Chikballapur cluster visited the schools in Kanakapura to understand the best practices of these schools in implementing Sikshana programs. After these visits they had a cluster level meeting to discuss what could be adopted in their cluster and how to improvise certain programs to make it more effective in their cluster.

Outcome: Motivate Teachers to embrace technology in classrooms

Fundamentals of Computer Training

Sikshana conducted basic computer handling and usage training for all teachers in the Kanakapura and Anekal taluk government higher primary schools. Over 300 teachers were trained this year by software professionals. The course covered basic Computer Hardware, Operating System Ubuntu Linux, Folder structure, Open office documents and spreadsheets and educational software like eToys and Stellarium. The focus of the training was on how best to use the available software to motivate children and also to aid them in school management. Many of the teachers have expressed interest for an in-depth training with willingness to participate even on a Sunday or other holidays. Mr.Srivatsa founder CEO of Vigyan Labs and trustee, Sikshana Foundation, managed the whole training process.



Linux and its advantages

On March 13th, during the science fair programme, a few volunteers from Qualcomm held a 2hr training program for nearly 30 teachers on the advantages of using the Linux operating system. They had system demos, comparison table with other operating systems, quick tips for people used to windows operating system etc. They also had demo on open source software in mobile phones and had a demo of 3G video service. The teachers were amazed at the possibilities of the using technology in the class rooms and left the session with a promise to embrace Sikshana technology initiative even more vigorously.



Outcome: Children Motivated to Perform Better

Sikshana at its core is a child centric motivational program and towards that end a number of activities are done throughout the year to create interest in the children to attend schools regularly and to take greater interest in learning. In addition to activities conducted in the schools like awarding spot prizes to children, annual day celebrations etc., Sikshana also conducts a number of events which are common to all schools to create a sense of competition among Sikshana schools.

DELL Laptop and Memory Chip Distribution Program:

Laptop and Memory chip Distribution was started at July and August Month 2009 children from 120 schools got their pen drives at their school in the Month of August. The distribution of memory chips to the children was done with an eye of getting the parents into the schools.

Memory Chip Distribution

Around 6500 students from 120 schools received their memory chips, sponsored by Dell, in their schools. The parents of the students were called to the school and they distributed the memory chips to the students. Essentially the opportunity was used to engage with the parents and make them aware of the importance of their role in the child's education.



Scholarship Program

277 children from the 120 higher primary schools nurtured by Sikshana were rewarded with a scholarship of Rs. 1200/- per year for three years of their high school studies. Savings bank accounts were opened for the children in Vishweshariah co-operative bank across two weeks in September. The mentors for the schools were on hand to oversee the proceedings and to advise the students and their parents on the importance of maintaining high academic excellence, completing 16 years of education and not to use the scholarship money for any other purpose but higher / technical education.



The scholarship students from the 30 schools that Qualcomm supported received their awards at the offices of Qualcomm in Bangalore. The 94 children with a few parents and teachers came to Qualcomm and were given a tour of the campus. The children were treated to two special mobile phone technology demonstrations which they found extremely interesting. After lunch the children showed off their artistic talents to employees of Qualcomm and all in all it was an experience of a lifetime for these children. After having experienced the touch and feel of a technology company most children said that they would like to work there someday.

Delhi Trip Quiz



1504 students from the 6th and 7th standard participated in the quiz competition held on August 8th at Kanakapura across three different locations and on August 13th at Chikballapur at a central location where 240 children took part in the quiz.

The quiz as usual was conducted by the Bangalore based Amruth Foundation. The quiz questions were a combination of general knowledge and academic subjects.

88 students from Kanakapura and 11 from Chikballapur were selected for the trip.

Delhi Trip

The 99 children who won the quiz competition went to Delhi in two batches of 50 and 49 respectively. The first batch left Bangalore on Oct 9th and the second batch left on Oct 15th. The duration of the trip including travel was 7 days. The children were accompanied by 7 and 6 teachers in each batch and they all stayed at Birla Mandir in Delhi.

For more than 90% of the children train ride itself is a first time experience and along with learning values of being independent, mixing with people of other backgrounds, understanding different languages and food habits, it is more than an educational tour by itself. This trip is also found to be creating an increased awareness in the villages back home and stories of these events can be found on our blog at <http://sikshana.blogspot.com/2008/10/delhi-trip-what-happens-back-home.html> and the typical impact can be found at <http://sikshana.blogspot.com/2009/02/delhi-trip-impact-on-children.html>

Dell Day at Kanakapura:



The Dell Day was organized on 24th of October 2009 at Kanakapura, in this program all 120 HPS and 34 High schools sent their most talented kids to take part in various competitions. There were contests in computer programs, clay modeling, yoga, singing, dancing, pick and speech, drawing craft and sports. All the dell volunteers who had come to Kanakapura had a good time with children.

Science Exhibition

On 13th of March Science Exhibition and workshop for teachers and children was organized by Qualcomm at Kanakapura. 18 schools were selected for the exhibition by the Qualcomm Volunteers. Acchalu School won the first prize, Hulibele won second prize and Yalchavadi won third prize. Another 30 schools under Qualcomm support sent their children to visit the science fair and take part in career options program held by Qualcomm Volunteers.



Outcome: Empower Children

Book Fair

From November 4th to the 14th Book Fairs were organized at Hoskote, Anekal, Chikballapur and Kanakapura where over 1500 children from the 220 schools took part along with their teachers. In Hoskote, Anekal and Chikballapur the book fair was held in a centrally located school. In Kanakapura the book fair was held in the four clusters of Harohalli, Sathnur, Kodihalli and Kanakapura. This time the students selected books based on their interest and gave the list to the mentors in charge. This was later ordered from the publishers in December. Navakarnataka Publishers and Sapna Publishers, Bangalore displayed more than 4,000 titles at the book fair.



Tuition Classes for SSLC Students

67 students from 7 high schools who were identified as most likely not to pass the 10th board exam were started off during the October holidays as a 15 day coaching camp. Due to the interest shown by the children the program was extended to every Sunday for the rest of the academic year. With no other incentive except learning these children came every Sunday and the two private school teachers Mr. XX (Mathematics) and Mrs. XX (English) toiled week over week and the end result is very encouraging. 48 out of the 67 students passed the exam.



Solar Lamps with High school Students:



One of the significant factors affecting a number of students in 10th grade was lack of regular electricity supply or lack of any electrical connection at their homes. A survey indicated that they could not afford kerosene and hence their study hours were being limited. Sikshana loaned 84 such children with solar lamps for use until the exams are over. The results of these 84 children speak on the impact it has had.

Empower Teachers

Teachers Committee to run Sikshana at Kanakapura

The first Friday of every month is earmarked for a meeting of a representative selection of Headmasters / Headmistresses to discuss upcoming events and to suggest changes to the program based on the feedback from the teachers and their perceptions. The committee proposed and initiated the printing of a newsletter called Sikshana Nudi with articles from students and teachers disseminating news and best practices amongst the different schools.

All the 120 HMs met in late August to allocate setting the questions paper and blueprint between the different schools for the different classes. At least three schools prepared the questions paper for the same subject and class. In a later meeting of expert teachers in those fields, the best question papers were selected, collated and sent for printing.

The teachers committee for Kanakapura schools was very active this year and planned and executed all the inter school programs in the taluk this year.

A three member committee has been formed in Chikballapur and is functioning reasonably well for a first year effort. The other two clusters Hoskote and Anekal is showing promise of forming a group on their own with a small group of teachers taking increasing initiative in Sikshana programs in the last two months of the academic year.

Outcome: Sports and Music

Weekly Athletics Training

Based on the success of the sports initiative last year partnering with Aata Odanata Sikshana decided to expand the program to all primary and high schools in Kanakapura. Every Saturday a training session was held at the Kanakapura municipal grounds with sport coaches from Bangalore brought in periodically by Aata Odanata to bring about a sense of discipline to the whole training program. Like last year this year also our kids participated in the elite Deccan Athletic Meet and won prizes and accolades.



Music Classes

As part of the music initiative Sikshana has employed the services of a music teacher from a nearby private school to conduct music classes every Saturday afternoon at Kanakapura. Students were initially selected by their school teachers for their talent and a subsequent selection done by the music teacher in September. The children are being trained in Carnatic and Bhavageethe music.

Outcome : Assessments

Assessments form a key component of the measure of performance of Sikshana schools. In addition to various quantitative and qualitative measures that are compiled by Sikshana staff and volunteers to come up with a school score, the twice yearly assessment by Amruth foundation based on the APF model of testing forms a critical part of measurement.

Assessment by Amruth Foundation



In the month of Aug / Sep students in the 5th standard were assessed in Kannada and Mathematics in an examination conducted by Amruth Foundation using as resource the students of the Degula Mutt B.Ed college. The students were trained by Mr. Vasudev Rao of Amruth foundation who evaluated the answer papers. The results were then compiled by Amruth foundation and shared with the Sikshana staff and the respective schools. Similar tests were held in all other clusters. Again during Feb / Mar the second assessment was done and the results of the same are as shown below.

Dell Laptop and Memory Chip Project Assessment

The “Dell Laptop and Memory Chip Project” assessment was conducted in Kanakapura for the 120 schools to assess the end of the year performance by children and teachers.



While most children demonstrated their eToys projects a few like Mamatha of Kodasikoppa school was very comfortable with using open office spreadsheet. Prizes were awarded for the best projects in various categories. The teachers who were present talked about the impact the laptops have had on their children. For example Sasalapura school principal talked about how in his school, three below B grade students got interested in academics through laptop and are all now scoring A+ grade. Other over whelming feedback from most teachers was that they all observed improved English reading skills among children which they attribute directly to the computers.

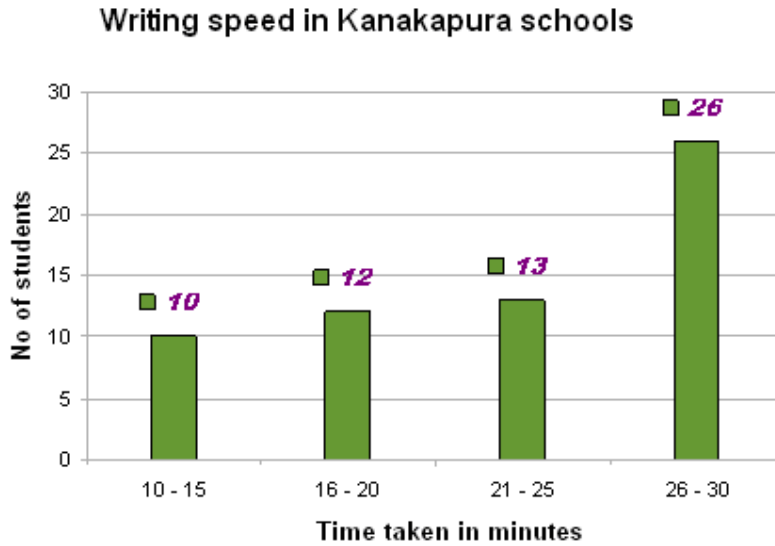
Writing Speed & Reading Comprehension Assessment:

This was test for Kanakapura schools students to examine the speed and neatness in writing.



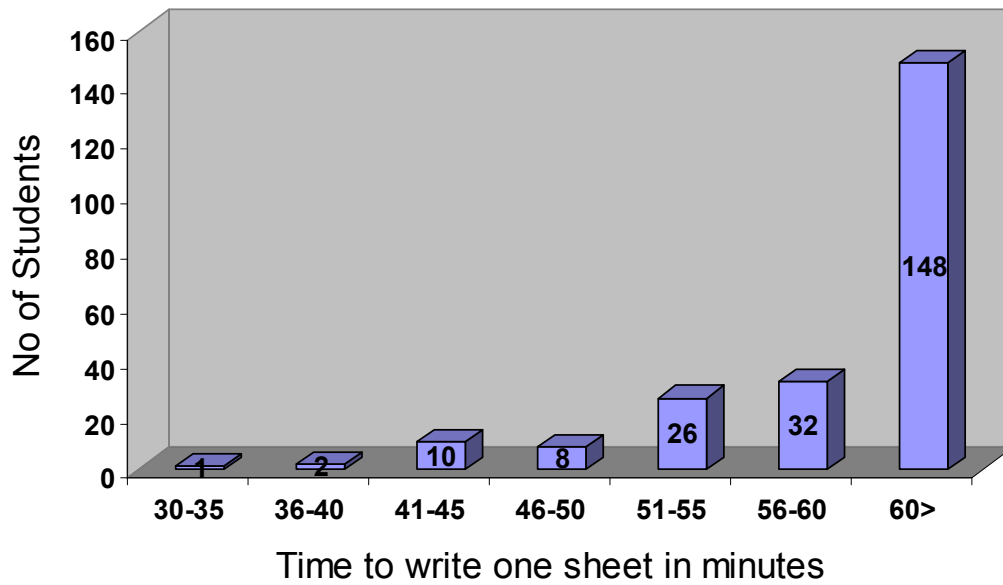
The big push this year among all the initiatives was the supply of writing sheets to children with a view of improving the speed and quality of writing. All schools have reported improvement in both categories and in the interest of quantifying the result we conducted a writing speed – reading comprehension test at Kanakapura. 59 students from 6th class from the 123 schools were selected for the final round and prizes were awarded both for speed and the ability to comprehend a standard

paragraph in Kananda and English. No student took more than 30 minutes to fill up one A4 size paper and the result of the competition is shown in the graph below.

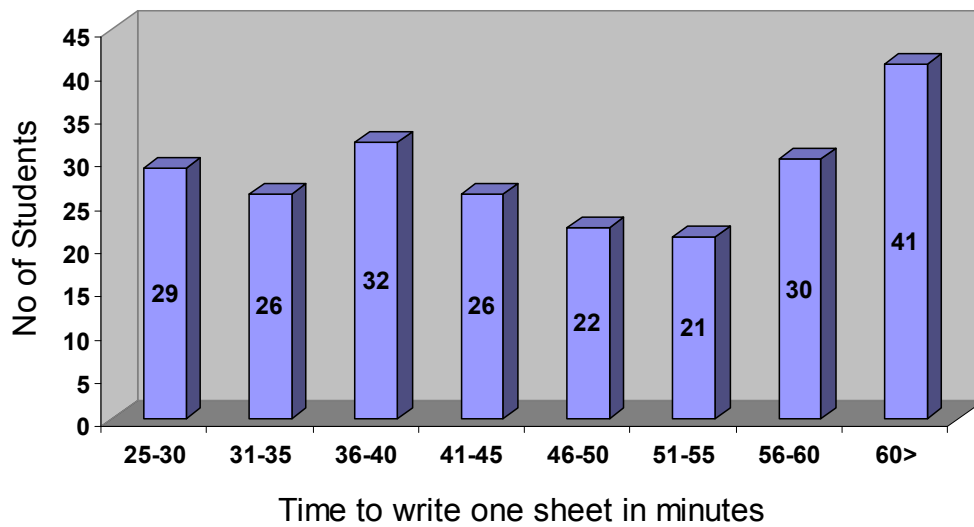


In Anekal since we were starting new this year we were able to do a baseline test on writing speed of 227 children in 12 schools once in September 2009 and again in March 2010. The result shown below has shown remarkable improvement in speed of writing and is in line with the general observation across all the 250 schools under Sikshana.

12 Schools - 227 Children - Speed Test Sep 2009



12 Schools - 227 Children - Speed Test Mar 2010



Impact of Sikshana

2009-10 Assessment Scores

120 of the 189 schools registered an impressive 75% or above in the independent assessment test conducted by Amruth foundation using the APF testing methods.

45 schools scored above the minimum 65% and have made a good start towards improving their scores to higher levels in the upcoming academic year.

24 schools of the 189 failed to score above the minimum score of 65 and 7 of these were able to show an improvement of over 10% from 1st assessment to 2nd. Sikshana will work closely with the staff of these schools in 2010-11 to improve the scores.

Block	School Name	1st Assessment	2nd Assessment	Change
KP	Hulibele	93	99	6%
KP	Kanakapura - G.G.M.S	91	98	7%
KP	Cheeluru	82	97	15%
KP	Venkataryanadoddi	63	97	34%
KP	Hulugondanahalli	83	96	13%
KP	Malligemettilu	88	96	8%
HK	Medimallasandra	71	96	25%
KP	Halasuru	73	95	22%
KP	Hegganuru	86	95	9%
KP	Guruvinapura	75	94	19%
KP	Narayanapura	96	94	-2%
HK	Anogondana halli	68	93	25%
KP	Doddalahalli	62	93	31%
KP	K.P.L. Colony	71	93	22%
KP	T.Hosahalli	86	93	7%
KP	Chikkenahalli	73	92	19%
KP	I. Gollahalli	66	92	26%
KP	Anedoddi	75	91	16%
KP	Gerahalli	78	91	13%
CB	Gidnahalli	61	91	30%
KP	Harihara	60	91	31%
KP	Haroshivanahalli	60	91	31%
KP	Kadasikoppa	88	91	3%
KP	Kokkarehosahalli	67	91	24%
KP	Konasandra	72	91	19%
CB	Yalavahalli	80	91	11%
KP	Anamanahalli	67	90	23%
KP	Bannimakodulu	61	90	29%
KP	Bilidale	79	90	11%
KP	Gabbadi	88	90	2%
KP	Hanchuguli	75	90	15%
CB	Kanjenhalli	87	90	3%
KP	Kottagalu	94	90	-4%

KP	Gollahalli	66	89	23%
KP	Picchanakere	61	89	28%
KP	Shivanahalli	88	89	1%
KP	T. Bannikuppe	88	89	1%
KP	Arekere	82	88	6%
KP	Halasuru B	87	88	1%
KP	Kallahalli	93	88	-5%
KP	Sathanuru	66	88	22%
KP	Kadushivanahalli	69	87	18%
KP	Koothaganahalli	65	87	22%
KP	Kothunuru	78	87	9%
KP	Mullahalli	65	87	22%
CB	Patrenahalli	61	87	26%
KP	Sasalapura	87	87	0%
KP	Thimmegowdana Doddi	77	87	10%
KP	Chikalegowdanadoddi	78	86	8%
KP	Kamsagara	88	86	-2%
AK	Koppa gate	74	86	12%
KP	Krishnayanadoddi	78	86	8%
KP	Banavasi	79	85	6%
KP	Hallimaranahalli	66	85	19%
KP	Kaggalahalli	78	85	7%
CB	Kuduvathi	57	85	28%
KP	P.Rampura	80	85	5%
KP	Aralalu	82	84	2%
KP	Athihalli	76	84	8%
KP	Dyavasandra	74	84	10%
KP	Halugondanahalli	88	84	-4%
KP	Harohalli	72	84	12%
KP	Hukunda	72	84	12%
KP	Kadahalli	81	84	3%
KP	Kallanakuppe	88	84	-4%
KP	Kanakapura - G.K.B.M.S	79	84	5%
KP	Thokasandra	86	84	-2%
KP	Doddamuduvadi	77	83	6%
KP	Elagahalli	63	83	20%
KP	Hosadurga	72	83	11%
KP	Hunasanahalli	66	83	17%
KP	Kabbalu	63	83	20%
KP	Medamaranahalli	82	83	1%
KP	Nayakanahalli	66	83	17%
KP	Thungani	81	83	2%
KP	Ambedkar Nagara	57	82	25%
KP	Biliganakuppe	79	82	3%
KP	Chikkalahalli	81	82	1%
KP	Erandyapanahalli	76	82	6%

CB	Kuppahalli	56	82	26%
HAL	Vibuthipura	57	82	25%
KP	Arekattedoddi	67	81	14%
AK	Bingipura	48	81	33%
KP	Goduru	81	81	0%
KP	Kadujakkasandra	71	81	10%
KP	Keralalusandra	78	81	3%
KP	Kotekoppa	72	81	9%
AK	Malenallasandra	75	81	6%
KP	Vaderahalli	85	81	-4%
KP	Baradanahalli	76	80	4%
KP	Bijjahalli	78	80	2%
KP	Dhalimba	78	80	2%
KP	Honniganahalli	61	80	19%
KP	Kanakapura – 02	58	80	22%
KP	Karikaldoddi Gate	69	80	11%
KP	Kebbare	85	80	-5%
CB	Mailappanahalli	66	80	14%
KP	Melekote	65	80	15%
KP	Maralavadi	82	79	-3%
KP	Thippuru	76	79	3%
HK	Thiruvaranga	61	79	18%
HAL	Vimanapura	71	79	8%
KP	Gulaganahalli	76	78	2%
KP	Kolliganahalli	74	78	4%
KP	Nagarasanakote	83	78	-5%
KP	Paduvanagere	60	78	18%
KP	Salabanni	70	78	8%
KP	Doddakalbalu	77	77	0%
AK	Hulimangala	62	77	15%
KP	Kodihalli	82	77	-5%
KP	Mavathur	63	77	14%
HK	Mutkur	66	77	11%
KP	Somedyanahalli	76	77	1%
KP	Aregadakalu	55	76	21%
KP	Bandiganahalli	78	76	-2%
KP	Chikkalbalu	70	76	6%
KP	Doddasadenahalli	80	76	-4%
KP	Maralebekuppe	82	76	-6%
KP	Algakalu	75	75	0%
KP	Chowkasandra	75	75	0%
KP	Gattigunda	78	74	-4%
KP	Gowdahalli	74	74	0%
KP	Nallahalli	64	74	10%
KP	Seegekote	74	74	0%
KP	Uyyambahalli	61	74	13%

KP	Horalagallu	58	73	15%
KP	Marale	65	73	8%
HK	Narayanakere	57	73	16%
KP	Therubeedi	68	73	5%
CB	Andarlahalli	74	72	-2%
KP	Boohalli	52	72	20%
KP	Shivanegowdanadoddi	71	72	1%
KP	Thattekere	75	72	-3%
KP	Acchalu	60	71	11%
AK	Dyavasandra	69	71	2%
AK	Harappanahalli	65	71	6%
CB	Kandavara	67	71	4%
CB	Kanganahalli	52	71	19%
HAL	Nellurpura [T]	62	71	9%
KP	Sarahaddinadoddi	71	71	0%
HK	Bhaguru	60	70	10%
AK	Byatarayana Doddi	59	70	11%
KP	Chikkamuduvadi	70	70	0%
CB	Nayanahalli	65	70	5%
AK	Nosenoor	70	70	0%
HK	D.Hosahalli	59	69	10%
AK	Krishna Doddi	49	69	20%
CB	Agalagurki	56	68	12%
AK	Kallubalu	57	68	11%
KP	Yadamaranahalli	67	68	1%
AK	Yarandahalli	68	68	0%
AK	Bannerugatta	57	67	10%
AK	Begihalli	68	67	-1%
HK	Doddadunnasandra	57	67	10%
CB	Doddamarali	56	67	11%
KP	Kachuvanahalli	72	67	-5%
CB	Nandi	44	67	23%
KP	Yalachavadi	51	67	16%
KP	Alanatha	65	66	1%
AK	Konasandra	64	66	2%
AK	Sakalavara	76	66	-10%
AK	Vabasandra	59	66	7%
HK	Gunduru	58	65	7%
AK	Koppa	59	65	6%
AK	Ragihalli	54	65	11%
AK	Madapattana	44	64	20%
KP	Bettegoudana doddi	49	63	14%
HK	Devanagundi	42	62	20%
AK	Liganapura	37	57	20%
AK	Hennagara	46	57	11%
KP	Attiguppe	37	53	16%

AK	Bilvardhanahlli	39	52	13%
AK	Kannayakanagar	55	64	9%
KP	Kolagondanahalli	62	64	2%
CB	Kolaganahalli	55	63	8%
AK	Mantapa	60	63	3%
HAL	Nellurpura [K]	62	63	1%
AK	Samipgehalli	62	63	1%
CB	Ajjavara	55	62	7%
AK	Rajapura	58	62	4%
KP	Doddakabbahalli	62	62	0%
AK	Maragondanahalli	67	62	-5%
KP	A.Rampura	55	61	6%
AK	Jigani	50	57	7%
AK	Haragadde	47	55	8%
KP	Thotahalli	49	55	6%
CB	Beedaganahlli	46	54	8%
CB	Shrirampura	48	53	5%
AK	Anayanadoddi	39	44	5%

The second measure of performance which is the academic performance of children in 7th grade is listed below.

2009-10 7th class Academic Performance

The target for each school here is to have at least 80% of the children score above 50% (grade B) in class 7 final exam. 158 schools out of 178 schools were able to achieve that goal with 41 schools having 100% of the children scoring B grade or above. 11 schools are lower primary schools and have classes upto 5th only and hence this metric does not apply to those. The 20 schools that could not achieve this target will be closely monitored by Sikshana in the next academic year.

Block	School Name	No. of Students	1 st Sem	2 nd Sem	% below B
CB	Agalagurki	32	1	0	0%
CB	Ajjavara	17	0	0	0%
KP	Algakakalu	23	2	0	0%
KP	Ambedkar Nagara	13	4	0	0%
KP	Aralalu	17	4	0	0%
KP	Attiguppe	4	0	0	0%
KP	Bilidale	20	1	0	0%
KP	Cheeluru	28	3	0	0%
KP	Chikkamuduvadi	45	9	0	0%
KP	Chikkenahalli	27	2	0	0%
KP	Doddakabbahalli	20	3	0	0%
KP	Doddalahalli	56	4	0	0%
CB	Doddamarali	12	1	0	0%
KP	Doddamuduvadi	13	5	0	0%
KP	Dyavasandra	19	0	0	0%
KP	Gabbadi	17	0	0	0%
KP	Gollahalli	27	1	0	0%
KP	Hulibebe	36	2	0	0%

KP	Hunasanahalli	55	5	0	0%
KP	Kachuvanahalli	18	0	0	0%
KP	Kallahalli	30	2	0	0%
KP	Kamsagara	26	2	0	0%
KP	Kodihalli	162	20	0	0%
KP	Kokkarehosahalli	18	1	0	0%
CB	Kolaganahalli	26	5	0	0%
KP	Koothaganahalli	30	3	0	0%
KP	Kotekoppa	20	0	0	0%
KP	Kottagalu	21	1	0	0%
AK	Liganapura	5	0	0	0%
AK	Madapattana	19	2	0	0%
CB	Mailappanahalli	27	0	0	0%
KP	Maralavadi	82	8	0	0%
KP	Mavathur	12	0	0	0%
KP	Nagarasanakote	26	3	0	0%
KP	Narayanapura	25	0	0	0%
KP	Salabanni	17	0	0	0%
KP	Shivanegowdanadoddi	26	8	0	0%
CB	Shrirampura	28	0	0	0%
KP	Somedyapanahalli	13	2	0	0%
KP	T.Hosahalli	14	0	0	0%
KP	Thippuru	11	1	0	0%
KP	Harohalli	135	3	2	1%
KP	Halasuru	32	5	1	3%
KP	Bandiganahalli	31	4	1	3%
KP	Kallanakuppe	29	0	1	3%
KP	Kanakapura - G.K.B.M.S	50	9	2	4%
KP	Vaderahalli	24	1	1	4%
AK	Harappanahalli	23	2	1	4%
HK	Mutkur	23	1	1	4%
KP	Elagahalli	21	2	1	5%
KP	Biliganakuppe	20	6	1	5%
CB	Beedaganahalli	19	3	1	5%
KP	Thimmegowdana Doddi	37	3	2	5%
HK	Thiruvaranga	17	1	1	6%
KP	Sathanuru	82	6	5	6%
KP	Gulaganahalli	16	3	1	6%
KP	P.Rampura	16	2	1	6%
AK	Yarandahalli	31	5	2	6%
KP	Hukunda	46	3	3	7%
KP	Kolliganahalli	15	4	1	7%
KP	Krishnayanadoddi	29	3	2	7%
KP	T. Bannikuppe	29	14	2	7%
CB	Kanganahalli	43	8	3	7%
KP	Bettegoudana doddi	14	3	1	7%
KP	Kebbare	14	2	1	7%
KP	Thotahalli	14	5	1	7%
KP	Kothunuru	26	4	2	8%
HK	Devanagundi	51	1	4	8%
CB	Patrenahalli	12	7	1	8%
KP	Doddakalbalu	23	4	2	9%
HK	D.Hosahalli	11	3	1	9%
HK	Doddadunnasandra	32	4	3	9%

HK	Narayanakere	21	3	2	10%
KP	Thungani	42	8	4	10%
KP	Arekattedoddi	20	3	2	10%
KP	Hanchuguli	10	2	1	10%
KP	Kolagondanahalli	80	13	8	10%
KP	K.P.L. Colony	29	6	3	10%
KP	Hosadurga	96	7	10	10%
KP	Gowdahalli	19	0	2	11%
KP	Halugondanahalli	38	3	4	11%
KP	Kanakapura - G.G.M.S	82	10	9	11%
HK	Anogondana halli	9	2	1	11%
KP	Aregadakalu	9	0	1	11%
HK	Bhaguru	18	2	2	11%
KP	Dhalimba	18	3	2	11%
KP	Kabbalu	27	6	3	11%
KP	Kadasikoppa	27	3	3	11%
KP	Keralalusandra	18	2	2	11%
CB	Kuduvathi	27	3	3	11%
KP	Sarahaddinadoddi	9	2	1	11%
KP	Anedoddi	34	9	4	12%
KP	Kaggalahalli	34	5	4	12%
KP	Erandyapanahalli	42	5	5	12%
KP	Banavasi	24	3	3	13%
KP	Boohalli	16	2	2	13%
CB	Kuppahalli	40	6	5	13%
KP	Kadujakkasandra	23	5	3	13%
KP	Maralebekuppe	23	4	3	13%
KP	Acchalu	53	7	7	13%
KP	A.Rampura	15	1	2	13%
KP	Hulugondanahalli	15	2	2	13%
KP	Konasandra	15	2	2	13%
KP	Anamanahalli	22	3	3	14%
KP	Hegganuru	14	6	2	14%
HK	Medimallasandra	7	1	1	14%
KP	Nallahalli	35	4	5	14%
AK	Ragihalli	14	2	2	14%
KP	Sasalapura	14	4	2	14%
KP	Guruvinapura	41	6	6	15%
KP	Harihara	20	4	3	15%
KP	Doddasadenahalli	13	1	2	15%
AK	Kannayakanagar	13	3	2	15%
KP	Picchanakere	13	2	2	15%
AK	Sakalavara	32	5	5	16%
AK	Begihalli	19	5	3	16%
HK	Gunduru	19	2	3	16%
KP	Kadushivanahalli	19	2	3	16%
KP	Thattekere	19	5	3	16%
AK	Kallubalu	31	7	5	16%
KP	Thokasandra	62	2	10	16%
KP	Kanakapura - 02	92	18	15	16%
KP	Baradanahalli	6	1	1	17%
KP	Chikkalbalu	24	9	4	17%
KP	Horlagallu	18	4	3	17%
AK	Konasandra	24	6	4	17%

KP	Melekote	6	1	1	17%
AK	Nosenoor	18	6	3	17%
KP	Paduvanagere	12	6	2	17%
KP	Seegekote	24	8	4	17%
KP	Bannimakodulu	41	8	7	17%
KP	Hallimaranahalli	29	5	5	17%
KP	Honniganahalli	29	7	5	17%
AK	Bingipura	23	5	4	17%
KP	Yadamaranahalli	23	6	4	17%
AK	Koppa	17	5	3	18%
KP	Mullahalli	34	15	6	18%
CB	Yalavahalli	28	8	5	18%
AK	Bilvardhanahalli	33	7	6	18%
CB	Gidnahalli	33	11	6	18%
AK	Hulimangala	11	4	2	18%
AK	Krishna Doddi	11	3	2	18%
AK	Malenallasandra	11	3	2	18%
KP	I. Gollahalli	49	3	9	18%
KP	Haroshivanahalli	16	6	3	19%
KP	Shivanahalli	48	15	9	19%
AK	Vabasandra	16	5	3	19%
AK	Bannerugatta	111	37	21	19%
KP	Uyyambahalli	31	3	6	19%
KP	Venkatarayanadoddi	51	11	10	20%
CB	Andarahalli	25	4	5	20%
KP	Arekere	10	4	2	20%
KP	Halasuru B	20	8	4	20%
CB	Kandavara	25	12	5	20%
AK	Koppa gate	10	3	2	20%
KP	Malligemettilu	10	4	2	20%
AK	Rajapura	15	10	3	20%
KP	Therubeedi	25	5	5	20%
KP	Athihalli	19	3	4	21%
KP	Karikaldoddi Gate	14	5	3	21%
KP	Goduru	9	6	2	22%
KP	Bijjahalli	31	8	7	23%
AK	Hennagara	52	30	12	23%
KP	Nayakanahalli	17	5	4	24%
HAL	Vimanapura	29	4	7	24%
KP	Gerahalli	20	5	5	25%
AK	Mantapa	35	10	9	26%
KP	Kadahalli	15	11	4	27%
KP	Alanatha	25	14	7	28%
KP	Medamaranahalli	25	11	7	28%
KP	Chikkalahalli	7	5	2	29%
AK	Jigani	112	40	33	29%
AK	Haragadde	66	25	20	30%
CB	Nandi	67	35	21	31%
AK	Maragondanahalli	28	16	9	32%
AK	Byatarayana Doddi	3	2	1	33%
CB	Nayanahalli	12	7	4	33%
KP	Yalachavadi	35	16	12	34%
AK	Anayanadoddi	0	0	0	n/a
KP	Chikalegowdanadoddi	0	0	0	n/a

KP	Chowkasandra	0	0	0	n/a
AK	Dyavasandra	0	0	0	n/a
KP	Gattigunda	0	0	0	n/a
CB	Kanjenhalli	0	0	0	n/a
KP	Marale	0	0	0	n/a
HAL	Nellurpura [K]	0	0	0	n/a
HAL	Nellurpura [T]	0	0	0	n/a
AK	Samipigehalli	0	0	0	n/a
HAL	Vibuthipura	0	0	0	n/a

Appendix 1

School ranking methodology and school list for year 2008-09

Criteria

Academics	Sikshana Metrics	Community
Jul 08 Assessment for 5 th	Annual School Plan	SDMC or Community Cooperation
Mar 09 Assessment for 5 th	Delhi Trip Winners	Community Investment in the school
1st Sem C Grade 7th	Spot Prize Distribution	Grama Panchayat fund
2nd Sem C Grade 7th	Library Book Usage	
KSQAO Exam 2007-08	Diary Usage	
KSQAO Exam 2008-09	Computer Usage	
	School Environment	
	School Achievement	
	Funds Usage	
	Mentors Observation	

The schools were awarded points on the metrics as show above with the maximum possible points for each category as shown below.

Sl. No.	School Code	School Name	Cluster Name	Donor	July Assessment	March Assessment	1st Sem C Grade 7th	2nd Sem C Grade 7th	KSQAO Exam Result 2007-08	KSQAO Exam Result 2008-09
					(In %)	(In %)	0	0	100	100
1	NMS	Nammura Shale	Kanakapura	Vibha	100.00	100	0	0	100	100

Annual School Plan	No. of Students for Delhi Trip	Spot Prize Distribution	Library Book Usage	Diary Usage	Computer Usage	School Environment	School Achievement	
10 pts	10 pts	10 pts	10 pts	10 pts	10 pts	10 pts	5 pts (sports)	5 pts (cultural)
10	10	10	10	10	10	10	5	5

Funds Usage	Mentors Observation	SDMC or Community Co-operation	Community Investment in the school	Grama panchayath fund
Total Exps/ Total Amount	10 pts	10 pts	(In Rs.)	(In.Rs)
100	10	10	100000	100000

Based on weights given to each category the totals are computed and added up to get a maximum of 960. The school ranking shown below for all the schools is out of a total of 960.

School Code	7th Strength	Semester Exams	5th Strength	Assessments	KSQAO	Delhi	Extra Curricular
NMS	17	5.50	15	14.00	10.00	2.00	2.50
Sikshana Core		Mentor Rank		SDMC	Funds Usage		Total Score
10.00		2		1	1		960.00

Rank	School Name	School Strength	Total Score	Award
1	Halugondanahalli	203	837	Sikshana School of Excellence
2	Hulibele	154	825	Sikshana School of Excellence
3	Hosadurga	330	824	Sikshana School of the Year
4	Harohalli	399	820	Best Large School of the Year
5	Kamsagara	107	814	
6	Vaderahalli	92	805	Best Small School of the Year
7	Halasuru	174	802	Best School in Computer Application
8	Sathanuru	278	800	
9	Kaggalahalli	145	800	Most Improved School of the Year
10	Acchalu	177	787	
11	Erandyapanahalli	188	784	
12	Malligemettalu	80	782	
13	Kachuvanahalli	107	782	
14	Anedoddi	178	776	
15	Chikkamuduvadi	208	776	
16	Gabbadi	101	771	
17	P.Rampura	85	769	
18	Thotahalli	127	768	
19	Kottagalu	111	764	
20	Doddalahalli	301	763	
21	Boohalli	122	758	
22	Arekere	71	752	Special Award - Most inquisitive children
23	Kokkarehosahalli	74	751	
24	Kodihalli	528	751	
25	Sasalapura	134	749	
26	Gollahalli	115	744	
27	Picchanakere	78	741	
28	Kadujakkasandra	116	739	
29	Doddakalbalu	102	734	
30	Venkatarayanaoddi	150	731	
31	Chikkenahalli	110	729	
32	Arekattedoddi	94	729	
33	Koothaganahalli	114	728	
34	Uyyambahalli	143	727	
35	Karikaldoddi Gate	86	724	

36	Bijjahalli	143	724
37	Somedyanahalli	62	724
38	Therubeedi	116	723
39	Nayakanahalli	83	720
40	Nallahalli	252	719
41	Chikkalhalli	54	717
42	Mullahalli	168	713
43	Bannimakodulu	162	711
44	Thokasandra	190	707
45	Anamanahalli	95	706
46	Gerahalli	106	706
47	Narayanapura	101	706
48	Chikkalbalu	118	705
49	Cheeluru	113	704
50	Maralavadi	342	702
51	A.Rampura	97	701
52	Banavasi	139	701
53	Ambedkar Nagara	135	699
54	Nagarasanakote	98	699
55	Dyavasandra	84	698
56	Thungani	153	697
57	Kolagondanahalli	401	695
58	Elagahalli	172	695
59	Bilidale	92	694
60	Thimmegowdana Doddi	78	693
61	Hunasanahalli	242	693
62	Guruvinapura	117	692
63	Yadamaranahalli	102	691
64	Kanakapura - G.G.M.S	229	690
65	Bandiganahalli	88	690
66	Kolliganahalli	80	689
67	Kallanakuppe	118	688
68	Doddakabbahalli	98	683
69	Thattekere	89	682
70	Harihara	106	682
71	Doddasadenahalli	78	682
72	Kadushivanahalli	105	680
73	Doddamuduvadi	76	679
74	K.P.L. Colony	174	679
75	Honniganahalli	86	677
76	Gowdahalli	125	676
77	Medamaranahalli	109	675
78	Hukunda	153	673
79	Kadasikoppa	98	673
80	Aralalu	116	673
81	Dhalimba	90	667
82	Kanakapura - 02	574	666
83	Shivanahalli	150	663
84	Biliganakuppe	75	662
85	Goduru	64	662
86	Thippuru	65	662
87	Keralalusandra	106	658
88	Algadakalu	83	658
89	Kallahalli	127	651
90	Kebbare	76	645
91	Kothunuru	73	644
92	Hallimaranahalli	117	641

93	Shivanegowdanadoddi	110	635
94	Maralebekuppe	105	634
95	Salabanni	107	634
96	Krishnayyanadoddi	97	627
97	T.Hosahalli	77	616
98	Konasandra	73	612
99	Yalachavadi	133	612
100	Paduvanagere	103	609
101	Halasuru	74	608
102	Hegganuru	75	607
103	Mavathur	71	606
104	I. Gollahalli	181	605
105	Kabbalu	78	604
106	Alanatha	105	604
107	Kadahalli	64	601
108	Baradanahalli	59	601
109	Athihalli	90	598
110	Kotekoppa	109	597
111	T. Bannikuppe	98	595
112	Kanakapura - G.K.B.M.S	225	591
113	Haroshivanahalli	87	587
114	Gattigunda	69	578
115	Horalagallu	114	578
116	Hulugondanahalli	77	575
117	Chikalegowdanadoddi	41	569
118	Seegekote	96	557
119	Gulaganahalli	70	545
120	Chowkasandra	47	538

Board of Governors for Sikshana



Chief Mentor - The founder member of Sivasri Trust, which operates Sikshana is **Mr E S Ramamurthy**. He has had a long and distinguished career in Industry, ending up as the CEO of a large Organization. Subsequently, he functioned as a Senior Adviser to the Govt. of India for a while, before opting to involve himself with socially productive causes on a full time basis.



Chairman - Mr Prashanth Prakash Prashanth Prakash, Partner, Accel India. Before joining Accel as a Partner, Prashanth was a Partner at Erasmic Venture Fund. At Accel he will focus on Internet, Healthcare & Retail. Prashanth serves on Boards of Kaati Zone, Cnergyis, HolidayIQ and other early stage companies. Before Erasmic, Prashanth founded NetKraft and establish it as one of the leading Offshore solutions company focusing on the Retail and HealthCare Verticals. NetKraft was acquired by Texas based Adea Systems. Previously, Prashanth also Founded VisualReality, a multimedia publishing company.

He started his career at S3 Technologies USA, a division of GSE systems, building Case Tools for real-time simulations (GemCase). Prashanth holds a Masters degree in Computer Science from the University of Delaware, USA, and an Undergraduate degree, in Computer Science, from the Bangalore Institute of Technology, India.



Ms Meenakshi

has been the driving force behind Mr Ramamurthy. She strongly believes that there is more in 'giving' than in 'acquiring', more so beyond a point in life. The Trust was started with her Funds at a time when she least afforded it.



Mr Srivatsa Krishnaswami is a software professional with an M Tech from IIT Chennai. He presently holds a senior position in a major multi-national firm in Bangalore. With a passion for the cause of public education system, he is a strong motive force behind the Trust in all its programs.



Ms Indira Sharma is a Post Graduate in Business Administration from the University of Mysore with awards from the State and the University for her performance. She is presently a Vice-President in a large reputed Company, responsible for marketing its products in a highly competitive environment. She has a strong parallel interest in primary education, to which she devotes considerable effort and time.



Mr A Balamuralikrishna, the financial expert in the group, is a highly successful and competent Chartered Accountant, with extensive practice both in India and abroad. He has a personal interest in assisting social causes.



Mr Ravindra Krishnappa, Director and Co-Founder of Inatech Infosolutions Pvt. Ltd. has been in the IT industry for more than two decades. He started with Tata Unisys after his Mechanical engineering degree and spent many years outside of the country in the US, UK and Switzerland. He left TUL in 1995 to help start a Business and Software consulting venture called EWI Business Consulting. Oracle Corporation acquired this company and renamed it as Oracle Solution Services in 1999.

He left Oracle in Feb 2003 as the Executive Director of their offshore consulting division. His special professional interests include Business and strategy consulting, application of new technology and change management. He is a regular speaker at seminars and is also on the board of several companies in an advisory capacity. On a personal level, he has a passionate interest in the public education system.



Dr. V.A.Sastry, Director, RelQ holds an Electrical Engineering degree from REC Warangal and a PhD in Computer Applications from the University of Waterloo in Canada. In his 25 years of professional Software experience, Dr. Sastry has been responsible for the successful completion of a number of software projects of varying sizes in the field of Process Control and Simulation. Dr. Sastry has been associated with Tata Consulting Engineers and Macmet's Simulation system division.

He has been credited with the achievement of obtaining an ISO 9001 / TickIT certification for Infosys Technologies Ltd, Bangalore where he was a Director on the Board responsible for Quality and Productivity. Dr. Sastry is a co-founder of RelQ and manages the Quality Processes implementation at RelQ. Dr. Sastry is also a Director at MUSA Software Engineering that does consulting on ISO & CMM for various large IT Companies. Dr. Sastry is a staunch believer in the statement that a Healthy Mind is a necessity for a healthy body. His mantra to ensure a healthy body and mind is by virtue of meditation and spiritual cleanliness.



Dr. Ashoka Gurudas is a physician by profession. He completed his M.B.B.S. from J.N.M.C. Belgaum, Karnataka University in the year 1981. Subsequent to which he acquired postgraduate specialisation as Doctor of Medicine (M.D.,) from Bangalore Medical College. He worked as a lecturer in General Medicine at M.S.Ramaiah Medical College, Bangalore.

He is also one of the Promoters of Bangalore Hospital, South End Circle, Bangalore, which is very well known for its Medical Facility for more than 15 years. In addition to his profession he was actively involved in the family business of Horticulture, Farming and Real Estate for more than 20 years. Presently he is the Secretary of Basavanagudi Brahma Samaj and one of the Trustees of Brahma Samaj Appavu Pillai Girls School. He is the Managing Director of Niju Scribe a Medical Transcription Unit in Bangalore South.



K. K. Subramaniam ("Subbu") is a post-graduate in computer science with a deep interest in designing elegant and reliable system software products. He has over two decades of experience in UNIX/Linux based software in the areas of real-time embedded kernels, device drivers and network stacks. He has held various R&D positions as designer, architect, development manager, and world-wide product manager and consulting engineer in multinational companies IBM, Novell, Oracle and Network Appliance.


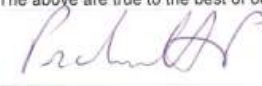



In 2005, he founded a company, Axcode Consulting, to focus on design consulting services in system software and network stacks that leverage FOSS developments. On a personal level, he has deep commitment to the cause of Education in the true sense of the term, and has been studying the subject extensively from academic and technical perspectives.



Mr. V.R. Prasanna, has joined Sivasri Trust as the Chief Operating Officer of Sikshana, an effort aimed at improving the quality of education in Government primary schools. The program now covers 50 schools and 10,000 children in the State. Prior to this, Mr Prasanna was the Founder CEO of Softrends, Inc. USA and has over 16 years of experience in the software industry. He has a Bachelor's degree in Electrical Engg from S.J. College of Engineering, Mysore and a Master's degree in Computer Engg from Texas A&M University, College Station, Texas.

After spending over 16 years in the US, Mr Prasanna has returned back to India and now venturing into spending his energy and talent to make a difference in the lives of the less fortunate here. In the years spent in US, he was involved with various NGO's in different projects. In 2004 he got introduced to a Bangalore based NGO called Samarthanam Trust for the Disabled and has been working with them for their various projects. He cofounded Pragathi in Nov 2005 with a few like minded individuals in Austin and executed various projects in collaboration with Odanadi, Rotary, AID and Sikshana around Mysore and Bangalore.

Financial Statements

SIVA SRI CHARITABLE TRUST								
Regd. Office: B 1103, 'Brigade Residency', Uttarahalli Road, Bangalore-560 061								
PAN: AADTS1642M Regd. No. Trust/718/10A/Vol B-II/S.691/96/CIT-II dated 19.12.1996								
FCRA No. 094421186 DATED 9.9.2005								
INCOME & EXPENDITURE ACCOUNT FOR THE YEAR ENDED 31st MARCH 2010								
EXPENDITURE		31.3.2010		INCOME				
To	Rs.	Rs.	By	Rs.	Rs.			
Expenses			Income					
GENERAL ACCOUNT		10,492,979	Interest on FD with Bank (Net of TDS)	11,338				
			TDS(Form 16A)	1,464				
FCRA ACCOUNT		8,592,409	Interest on SB A/c -- Axis Bank & SBM	40,058				
DEPRECIATION ON FIXED ASSETS		5,024	Donations Received		52,860			
Excess of Income Over Expenditure		(237,111)	Other Income		12			
			FCRA ACCOUNT:					
			Foreign Contributions Received	8,037,937				
			B/F from last year	650,610				
			Recovery of IT (TDS)	2,103				
			Interest on SB a/c with AXIS Bank	61,427				
			Interest on FD with Bank (incl. pr. Yr)	3,296				
			Less: Unutilised funds carried forward	8,755,373				
				162,964				
					8,592,409			
		18,853,301			18,853,301			
BALANCE SHEET AS AT 31st MARCH 2010								
LIABILITIES		31.3.2010		ASSETS				
	Rs.	Rs.		Rs.	Rs.			
CAPITAL FUND:			FIXED ASSETS:					
Opening Balance	1,570,302		PDA Computer Phone	5,238				
Add: Excess of Income over Expenditure	(237,111)		Less: Depreciation @ 60%	3,143				
		1,333,191			2,095			
FCRA ACCOUNT:			FILING CABINET	8,123				
Unutilised Funds C/F		162,964	Less: Depreciation @ 10%	406				
(Refer FCRA Balance Sheet)					7,717			
			AUDIO SYSTEM purchased in the year	14,750				
			Less: Depreciation @ 10%	1,475				
					13,275			
			CASH IN HAND:					
			General A/c	3,226				
			FCRA A/c	668				
					3,894			
			CASH AT BANK					
			ICICI Bank -- General A/c	-				
			Axis Bank -- General A/c	1,215,515				
			SBM -- General A/c	6,764				
				1,222,279				
			ICICI Bank -- FCRA A/c	-				
			Axis Bank -- FCRA A/c	77,000				
				77,000				
			FIXED DEPOSIT WITH BANK -- GENERAL A/c	73,289				
			FIXED DEPOSIT WITH BANK -- FCRA A/c	75,296				
					1,447,864			
			Rental Deposit -- FCRA A/c	-	9,000			
			INCOME-TAX DEDUCTED AT SOURCE -- ICICI	-	10,000			
			INCOME-TAX DEDUCTED AT SOURCE -- AXIS	-	845			
					1,464			
		1,496,155			1,496,155			
NOTE: ITEMS HAVE BEEN REGROUPED AS FOUND NECESSARY.								
As per Report of even date			The above are true to the best of our knowledge and belief.					
 R. RAGHAVENDRAN, B.Sc., F.C.A., DICM (MCX), Chartered Accountant Membership No. 22686 (1983)			 Chairman  Chief Mentor  Chief Executive Officer					
								
						Place: Bangalore. Date: July 26, 2010		
SIVA SRI CHARITABLE TRUST								

RECEIPTS & PAYMENTS ACCOUNT FOR THE YEAR ENDED 31st MARCH 2010

RECEIPTS		31.3.2010		PAYMENTS		31.3.2010	
		Rs.	Rs.			Rs.	Rs.
To	Opening Balances:			By	Closing Balances:		
	Cash in Hand:				Cash in Hand		
	General A/c	8,950			General A/c	3,226	
	FCRA A/c	124			FCRA A/c	668	
			9,074				3,894
	Cash at Bank:				Cash at Bank:		
	ICICI Bank -- General A/c	-			ICICI Bank -- General A/c	-	
	Axis Bank -- General A/c	1,050,077			Axis Bank -- General A/c	1,215,515	
	SBM -- General A/c	6,534			SBM -- General A/c	6,764	
		1,056,611				1,222,279	
	ICICI Bank -- FCRA A/c	-			ICICI Bank -- FCRA A/c	-	
	Axis Bank -- FCRA A/c	578,482			Axis Bank -- FCRA A/c	77,000	
		578,482				77,000	
			1,635,093				1,299,279
..	GENERAL ACCOUNT:			..	FIXED DEPOSIT WITH BANK -- GENERAL A/c		-
	Recovery of IT (TDS)	-		..	FIXED DEPOSIT WITH BANK -- FCRA A/c		-
	Fixed Deposit with Bank (matured)	421,686		..	GENERAL ACCOUNT:		
	Interest on FD with Bank (Net of TDS)	11,338			School Building Repairs & Improvement	72,100	
	Less: Re-investment in FD	11,338			Scholarship to Students	836,550	
			421,686		Educational Materials	216,902	
	Interest on SB a/c with Axis Bank	39,828			School Program & Evaluation Expenses	878,375	
	Interest on SB a/c with SBM	230			Computer & Peripheral Maintenance	5,643	
			40,058		Computer for schools	7,061,061	
	Donations Received	10,208,020			Training, Education Tour & Other Exp.	335,803	
	Other Income	12			Sikshana Project Administration	146,829	
			10,208,032		Mentoring Project	819,329	
	..				Administration Expenses	120,387	
	FCRA ACCOUNT:					10,492,979	
	Foreign Contributions Received		8,037,937		Purchase of Audio Systems	14,750	
	Interest on SB a/c with ICICI Bank	-			Payment of IT (TDS)	2,103	
	Interest on SB a/c with AXIS Bank		61,427				10,509,832
	Interest on FD with Bank (incl. pr. Yr)	3,296			..		
	Less: Re-investment in FD	3,296			FCRA ACCOUNT:		
			-		School Building Repairs & Improvement	25,020	
	Recovery of IT (TDS)		2,103		Scholarship to Students	227,100	
					Educational Materials	2,380,558	
			20,415,410		Educational Expenses -- Hospitality, Membe	10,894	
					School Program & Evaluation Expenses	2,460,185	
					Computer Etc., -- Media Centre	570,353	
					Training, Education Tour & Other Exp.	662,276	
					Mentoring Project	2,190,055	
					Administration Expenses	65,853	
						8,592,294	
					Bank Charges	111	
					Rental Deposit -- FCRA A/c	10,000	
					Payment of IT (TDS)	-	
							8,602,405
							20,415,410

As per Report of even date



R. Raghavendran
 R. RAGHAVENDRAN, B.Sc., F.C.A., DICM (MCX),
 Chartered Accountant
 Membership No. 22686 (1983)

Place: Bangalore.

Date: July 26, 2010

The above are true to the best of our knowledge and belief.

Prabhakar

Chairman

S. Ganesh

Chief Mentor

[Signature]

Chief Executive Officer

SIVA SRI CHARITABLE TRUST

The Numbers in simple terms

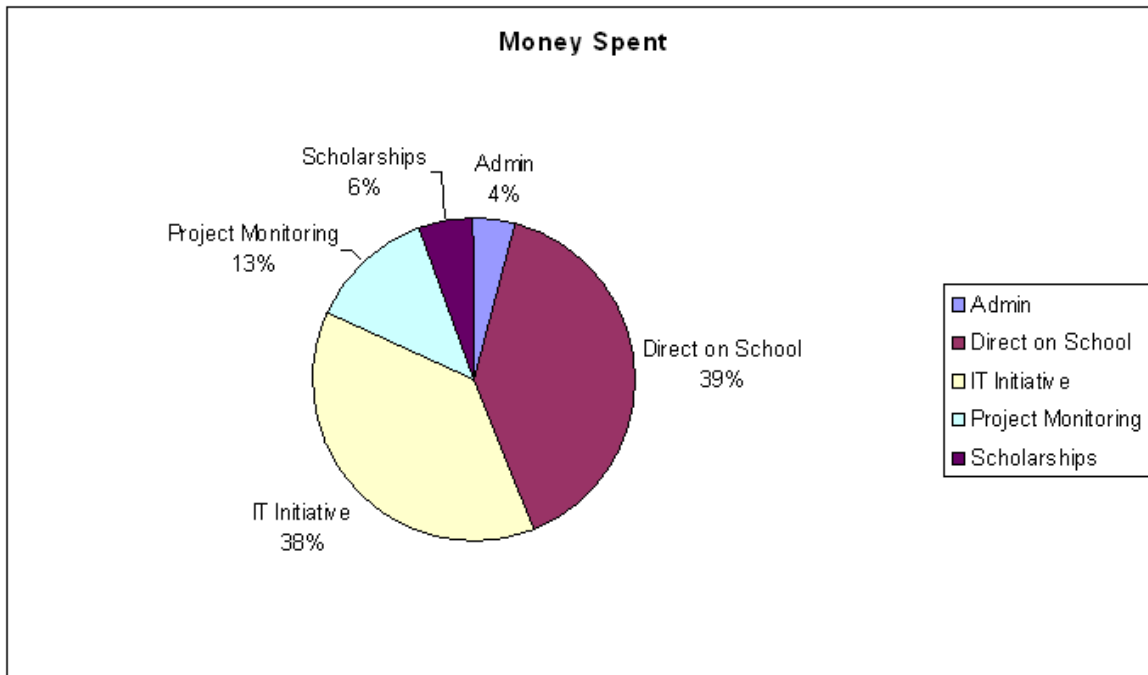
Expense Category	Amount	Percent
Admin	819261	4%
Direct on School	7544579	39%
IT Initiative	7221600	38%
Project Monitoring	2453814	13%
Scholarships	1069924	6%
Total	19109178	

The cost per child is Total Expense divided by number of children and in this case since Dell IT Initiative (Rs. 7.22laks) was donation in kind and Madanapalle Project spending (Rs. 6 laks) was by our partner organization GORD.

Total amount spent for the year 2009-10 is $(19109178 - 7221600 + 600000) = 12487578$

Total number of children covered by Sikshana program = 35,000

Cost per child = Rs. 356.



Sikshana Financial Transparency Standard (Donor vs Expense Matrix)

Expense Head	Expense Category	Sub Category	Total Expense	SubTotals
	Project			
	Admin	Audit	77280	
	Admin	HR	14666	
	Admin	IT	65207	
	Admin	Marketing	61455	
Admin	Admin	Office	49253	267861
	Common Expense	Event / Meet	527699	
	Common Expense	IT	92644	
	Common Expense	Resource Center	107173	
Direct on School	Common Expense	Training	291603	1019119
	Dell IT Project	Laptops	3759600	
	Dell IT Project	Pen Drives	3300000	
IT Initiative	Dell IT Project	Salaries	162000	7221600
Project Monitoring	Monitoring	Madanapalli	53800	53800
	Monitoring	Salaries	1012155	
Project Monitoring	Monitoring	Transport	1193359	2205514
Admin	Monitoring	Program Director	551400	551400
Project Monitoring	Monitoring	Project Coordinator	194500	194500
	Scholarship	2006 Batch	15724	
	Scholarship	2007 Batch	183600	
	Scholarship	2008 Batch	538200	
Scholarships	Scholarship	2009 Batch	332400	1069924
	School Expense	Assessment / Exams	258373	
	School Expense	Delhi Trip	299743	
	School Expense	Diaries / Notebooks	651397	
	School Expense	Highschools	405891	
	School Expense	Infrastructure	72100	
	School Expense	Laptops	546000	
	School Expense	Library	543406	
	School Expense	Papers	1258226	
	School Expense	School Funds	2259594	
Direct on School	School Expense	Teaching Help	230730	6525460
	Total Expenses for 2009-10		19109178	19109178
	Future Alloc Exp - Scholarship		664800	
	Donor Total Expense		19773978	
	Received from Donor		18229398	
	Previous Year Credit/Debit		671435	
	Prev Alloc Exp - Scholarship		327600	
	Committment Due from Donor		985488	
	Contribution from Sikshana		-439942	
	Balance		0	

Expense Category	Sub Category	Total Expense	Dell	Vibha	
Project			IT Project	KP Ph1	KP Ph3
Admin	Audit	77280			
Admin	HR	14666			
Admin	IT	65207	40000		
Admin	Marketing	61455			
Admin	Office	49253			
Common Expense	Event / Meet	527699		26020	117458
Common Expense	IT	92644		9178	26474
Common Expense	Resource Center	107173		9717	31877
Common Expense	Training	291603		25905	77681
Dell IT Project	Laptops	3759600	3759600		
Dell IT Project	Pen Drives	3300000	3300000		
Dell IT Project	Salaries	162000	162000		
Monitoring	Madanapalli	53800			
Monitoring	Salaries	1012155		90046	204766
Monitoring	Transport	1193359		113485	295949
Monitoring	Program Director	551400			212077
Monitoring	Project Coordinator	194500			74808
Scholarship	2006 Batch	15724			
Scholarship	2007 Batch	183600			
Scholarship	2008 Batch	538200			
Scholarship	2009 Batch	332400			122400
School Expense	Assessment / Exams	258373		18482	47296
School Expense	Delhi Trip	299743		29974	74936
School Expense	Diaries / Notebooks	651397		46935	94259
School Expense	Highschools	405891			
School Expense	Infrastructure	72100			
School Expense	Laptops	546000			
School Expense	Library	543406		40204	115973
School Expense	Papers	1258226		173050	239738
School Expense	School Funds	2259594		217442	517655
School Expense	Teaching Help	230730			
Total Expenses for 2009-10		19109178	7261600	800438	2253347
Future Alloc Exp - Scholarship		664800			244800
Donor Total Expense		19773978	7261600	800438	2498147
Received from Donor		18229398	7259600	712038	2016168
Previous Year Credit/Debit		671435	0	87962	481526
Prev Alloc Exp - Scholarship		327600			
Committment Due from Donor		985488	0	0	0
Contribution from Sikshana		-439942	2000	438	453
Balance		0	0	0	0

Expense Category	Sub Category	Total Expense	Qualcomm	Adobe-CAF
Project			KP Ph3	Anekal
Admin	Audit	77280		
Admin	HR	14666		10195
Admin	IT	65207		
Admin	Marketing	61455		
Admin	Office	49253		
Common Expense	Event / Meet	527699	254942	16050
Common Expense	IT	92644	31012	
Common Expense	Resource Center	107173	37341	
Common Expense	Training	291603	90998	22557
Dell IT Project	Laptops	3759600		
Dell IT Project	Pen Drives	3300000		
Dell IT Project	Salaries	162000		
Monitoring	Madanapalli	53800		
Monitoring	Salaries	1012155	239869	140500
Monitoring	Transport	1193359	346683	69655
Monitoring	Program Director	551400	248433	
Monitoring	Project Coordinator	194500	87632	
Scholarship	2006 Batch	15724		
Scholarship	2007 Batch	183600		
Scholarship	2008 Batch	538200	108000	
Scholarship	2009 Batch	332400	112800	
School Expense	Assessment / Exams	258373	55403	49500
School Expense	Delhi Trip	299743	87782	
School Expense	Diaries / Notebooks	651397	110418	148148
School Expense	Highschools	405891		
School Expense	Infrastructure	72100		
School Expense	Laptops	546000		546000
School Expense	Library	543406	135854	51205
School Expense	Papers	1258226	388168	75395
School Expense	School Funds	2259594	607396	210000
School Expense	Teaching Help	230730		
Total Expenses for 2009-10		19109178	2942731	1339205
Future Alloc Exp - Scholarship		420000	225600	
Donor Total Expense		9213793	3168331	1339205
Received from Donor		8241592	2957746	900000
Previous Year Credit/Debit		101947	101947	0
Prev Alloc Exp - Scholarship		327600	108000	
Committment Due from Donor		985488	0	439205
Contribution from Sikshana		-442833	638	0
Balance		0	0	0

Expense Category	Sub Category	Total Expense	Asha		Broadcom	
			KP Ph3	HighSchool	HAL	KP Ph3
Project						
Admin	Audit	77280				
Admin	HR	14666				
Admin	IT	65207				
Admin	Marketing	61455				
Admin	Office	49253				
Common Expense	Event / Meet	527699	55206			6712
Common Expense	IT	92644	13766			1513
Common Expense	Resource Center	107173	14576			1822
Common Expense	Training	291603	36554			4439
Dell IT Project	Laptops	3759600				
Dell IT Project	Pen Drives	3300000				
Dell IT Project	Salaries	162000				
Monitoring	Madanapalli	53800				
Monitoring	Salaries	1012155	119918	9000	38500	11701
Monitoring	Transport	1193359	150568	15000	4373	16911
Monitoring	Program Director	551400				12119
Monitoring	Project Coordinator	194500		5550		4275
Scholarship	2006 Batch	15724				
Scholarship	2007 Batch	183600				
Scholarship	2008 Batch	538200				
Scholarship	2009 Batch	332400				
School Expense	Assessment / Exams	258373	28372		9576	2703
School Expense	Delhi Trip	299743	44961			4282
School Expense	Diaries / Notebooks	651397	70402			5386
School Expense	Highschools	405891		405891		
School Expense	Infrastructure	72100				
School Expense	Laptops	546000				
School Expense	Library	543406	60306		10216	6627
School Expense	Papers	1258226	130945	10842	33173	10842
School Expense	School Funds	2259594	208249		63499	31580
School Expense	Teaching Help	230730			119980	
Total Expenses for 2009-10		19109178	933823	446283	279317	120912
Future Alloc Exp - Scholarship		194400				
Donor Total Expense		4706257	933823	446283	279317	120912
Received from Donor		4383846	932160	0	279317	120683
Previous Year Credit/Debit		0	0	0	0	0
Prev Alloc Exp - Scholarship		219600				
Committment Due from Donor		546283	0	446283	0	0
Contribution from Sikshana		-443471	1663	0	0	229
Balance		0	0	0	0	0

Expense Category	Sub Category	Total Expense	iGate	AID	CAF Gaye
Project			Hoskote	KP Ph3	KP Ph3
Admin	Audit	77280			
Admin	HR	14666			
Admin	IT	65207			
Admin	Marketing	61455			
Admin	Office	49253			
Common Expense	Event / Meet	527699	7684	16780	6712
Common Expense	IT	92644		3782	1513
Common Expense	Resource Center	107173		4554	1822
Common Expense	Training	291603	4616	11097	4439
Dell IT Project	Laptops	3759600			
Dell IT Project	Pen Drives	3300000			
Dell IT Project	Salaries	162000			
Monitoring	Madanapalli	53800			
Monitoring	Salaries	1012155	23300	29252	11701
Monitoring	Transport	1193359	31685	42278	16911
Monitoring	Program Director	551400		30297	
Monitoring	Project Coordinator	194500	3000	10687	
Scholarship	2006 Batch	15724			
Scholarship	2007 Batch	183600			
Scholarship	2008 Batch	538200			
Scholarship	2009 Batch	332400		9600	
School Expense	Assessment / Exams	258373	12232	6757	2703
School Expense	Delhi Trip	299743		10705	4282
School Expense	Diaries / Notebooks	651397	99290	13466	5386
School Expense	Highschools	405891			
School Expense	Infrastructure	72100			
School Expense	Laptops	546000			
School Expense	Library	543406	21033	16568	6627
School Expense	Papers	1258226	117257	27105	10842
School Expense	School Funds	2259594	85000	73951	29580
School Expense	Teaching Help	230730			
Total Expenses for 2009-10		19109178	405097	306879	102518
Future Alloc Exp - Scholarship		194400		19200	
Donor Total Expense		2925923	405097	326079	102518
Received from Donor		3051686	300000	325000	98817
Previous Year Credit/Debit		0	0	0	0
Prev Alloc Exp - Scholarship		219600			
Committment Due from Donor		100000	100000	0	0
Contribution from Sikshana		-445363	5097	1079	3701
Balance		0	0	0	0

Expense Category	Sub Category	Total Expense	IDG	Nandi Fmly
Project			KP Ph3	Chikkaballapur
Admin	Audit	77280		
Admin	HR	14666		
Admin	IT	65207		
Admin	Marketing	61455		
Admin	Office	49253		
Common Expense	Event / Meet	527699	13424	
Common Expense	IT	92644	3026	
Common Expense	Resource Center	107173	3643	
Common Expense	Training	291603	8878	
Dell IT Project	Laptops	3759600		
Dell IT Project	Pen Drives	3300000		
Dell IT Project	Salaries	162000		
Monitoring	Madanapalli	53800		
Monitoring	Salaries	1012155	23402	67500
Monitoring	Transport	1193359	33823	54124
Monitoring	Program Director	551400	24237	
Monitoring	Project Coordinator	194500	8548	
Scholarship	2006 Batch	15724		
Scholarship	2007 Batch	183600		
Scholarship	2008 Batch	538200		
Scholarship	2009 Batch	332400	21600	
School Expense	Assessment / Exams	258373	5405	17243
School Expense	Delhi Trip	299743	8564	29974
School Expense	Diaries / Notebooks	651397	10772	46935
School Expense	Highschools	405891		
School Expense	Infrastructure	72100		25000
School Expense	Laptops	546000		
School Expense	Library	543406	13254	58913
School Expense	Papers	1258226	21684	19185
School Expense	School Funds	2259594	59162	137500
School Expense	Teaching Help	230730		
Total Expenses for 2009-10		19109178	259422	456374
Future Alloc Exp - Scholarship		175200	43200	
Donor Total Expense		2092229	302622	456374
Received from Donor		2327869	300000	250000
Previous Year Credit/Debit		0	0	0
Prev Alloc Exp - Scholarship		219600		
Committment Due from Donor		0	0	0
Contribution from Sikshana		-455240	2622	206374
Balance		0	0	0

Expense Category	Sub Category	Total Expense	Scholarships			
			Hemant	Belur Fmly	Waran	Accel
Project						
Admin	Audit	77280				
Admin	HR	14666				
Admin	IT	65207				
Admin	Marketing	61455				
Admin	Office	49253				
Common Expense	Event / Meet	527699				
Common Expense	IT	92644				
Common Expense	Resource Center	107173				
Common Expense	Training	291603				
Dell IT Project	Laptops	3759600				
Dell IT Project	Pen Drives	3300000				
Dell IT Project	Salaries	162000				
Monitoring	Madanapalli	53800				
Monitoring	Salaries	1012155				
Monitoring	Transport	1193359				
Monitoring	Program Director	551400				
Monitoring	Project Coordinator	194500				
Scholarship	2006 Batch	15724				
Scholarship	2007 Batch	183600	183600			
Scholarship	2008 Batch	538200		183600	180000	36000
Scholarship	2009 Batch	332400				
School Expense	Assessment / Exams	258373				
School Expense	Delhi Trip	299743				
School Expense	Diaries / Notebooks	651397				
School Expense	Highschools	405891				
School Expense	Infrastructure	72100				
School Expense	Laptops	546000				
School Expense	Library	543406				
School Expense	Papers	1258226				
School Expense	School Funds	2259594				
School Expense	Teaching Help	230730				
Total Expenses for 2009-10		19109178	183600	183600	180000	36000
Future Alloc Exp - Scholarship		132000				
Donor Total Expense		1333233	183600	183600	180000	36000
Received from Donor		1777869	185889	0	180000	0
Previous Year Credit/Debit		0	0	0	0	0
Prev Alloc Exp - Scholarship		219600	0	183600	0	36000
Committment Due from Donor		0	0	0	0	0
Contribution from Sikshana		-664236	-2289	0	0	0
Balance		0	0	0	0	0

Expense Category	Sub Category	Total Expense	Sikshana
Project			Other Donors
Admin	Audit	77280	77280
Admin	HR	14666	4471
Admin	IT	65207	25207
Admin	Marketing	61455	61455
Admin	Office	49253	49253
Common Expense	Event / Meet	527699	6711
Common Expense	IT	92644	2380
Common Expense	Resource Center	107173	1822
Common Expense	Training	291603	4439
Dell IT Project	Laptops	3759600	0
Dell IT Project	Pen Drives	3300000	0
Dell IT Project	Salaries	162000	0
Monitoring	Madanapalli	53800	53800
Monitoring	Salaries	1012155	2700
Monitoring	Transport	1193359	1914
Monitoring	Program Director	551400	24237
Monitoring	Project Coordinator	194500	0
Scholarship	2006 Batch	15724	15724
Scholarship	2007 Batch	183600	
Scholarship	2008 Batch	538200	30600
Scholarship	2009 Batch	332400	66000
School Expense	Assessment / Exams	258373	2701
School Expense	Delhi Trip	299743	4283
School Expense	Diaries / Notebooks	651397	0
School Expense	Highschools	405891	0
School Expense	Infrastructure	72100	47100
School Expense	Laptops	546000	0
School Expense	Library	543406	6626
School Expense	Papers	1258226	0
School Expense	School Funds	2259594	18580
School Expense	Teaching Help	230730	110750
Total Expenses for 2009-10		19109178	618033
Future Alloc Exp - Scholarship		132000	132000
Donor Total Expense		750033	750033
Received from Donor		1411980	1411980
Previous Year Credit/Debit		0	
Prev Alloc Exp - Scholarship		0	
Committment Due from Donor		0	
Contribution from Sikshana		-661947	-661947
Balance		0	0